

## Item 9 Motions on Notice

### **MN01-02/24 Cr Wright - Intergenerational Practice Program**

---

File Ref: 35609V03 – 24/20176  
Author: Cr Wright  
Action Officer: Acting Director Community & Place  
Disclosure of Interest: Nil  
Attachments: 1

#### **Issue**

To consider the development of a research report, including stakeholder consultation, for the delivery of an externally run intergenerational practice program within the City of Wanneroo.

#### **Background**

Intergenerational practice, involving the bringing together of people from different age groups in mutually beneficial activities, has shown significant benefits for communities. Such programs promote understanding and learning between generations, foster respect and social cohesion, and can greatly enhance the wellbeing of participants.

Notable examples include the 'Old People's Home for Teenagers' and 'Old People's Home for 4 Year Olds', as documented by the Australian Broadcasting Corporation (ABC). These initiatives have demonstrated the positive impact of intergenerational interaction, highlighting benefits such as increased empathy, decreased loneliness, and enhanced social skills among participants. In this regard, exploring the potential of similar programs aligns well with local government objectives of fostering inclusive, supportive, and vibrant communities.

#### **Detail**

The aforementioned programs by the ABC have provided valuable insights into the effectiveness of intergenerational practice. The 'Old People's Home for 4 Year Olds', for example, brought together preschoolers and elderly residents of a retirement home for daily activities to see if uniting young and old could improve the health and wellbeing of older people. The documentary found that this regular interaction resulted in marked improvements in the physical and emotional well-being of both groups.

Similarly, 'Old People's Home for Teenagers' could provide vital social connections and learning opportunities. Introducing such a program within our local government area could address key community needs such as social isolation among the elderly and the need for meaningful, community-based learning experiences for young people. It aligns with our strategic objectives of fostering community engagement, enhancing social well-being, and supporting diverse groups within our community.

**Attachment 1**, *Intergenerational Communities Research Report*, provides a summary of initial research into this concept, including definitions and benefits of intergenerational practice programs for seniors, families, service providers and organisations. This report highlights there is only one example of an intergenerational program within the City's region; a program run by Ashdale Secondary College where students visited Brightwater's Kingsway Court Retirement Village. The teenagers taught retirees the latest in technology, helping them feel more confident with their mobile phones, while the seniors share their own knowledge, as well as relics from past technologies.

## Consultation

Intergenerational practice currently has a peak body operating in Australia (the Australian Institute for Intergenerational Practice), who are available for relevant data, grant navigation and resourcing. Some examples of intergenerational programs have been identified in **Attachment 1**.

Further research and consultation in a Wanneroo context is required, which forms part of this report's recommendation.

## Comment

Facilitating the provision of externally run intergenerational programs within our local government area could address key community needs such as social isolation among the elderly and the need for meaningful, community-based learning experiences for young people.

To consider the potential of having intergenerational practice programs within our community, it is proposed that Administration undertake research and stakeholder consultation on this topic and provide a report for the delivery of an externally run intergenerational practice program to Council for consideration.

The purpose of this proposed research and consultation is to understand external delivery models and best practice examples of intergenerational practice programs, including the affordability, benefit and success of these programs as well as examining the role of government, schools, retirement villages, services providers, community groups and other organisations in facilitating and/or delivering these programs.

## Statutory Compliance

Nil

## Strategic Implications

The proposal aligns with the following objective within the Strategic Community Plan 2021 – 2031:

- 1 ~ An inclusive and accessible City with places and spaces that embrace all*  
*1.4 - Bringing people together*

## Risk Appetite Statement

In pursuit of strategic objective goal 1, we will accept a Medium level of risk. The recent pandemic has challenged our previous event delivery, place activation and community connection processes, and the City accepts that meeting community expectations in a more restrictive environment needs flexibility and innovation if community connection is to develop and grow in contrast to social and individual isolation.

## Risk Management Considerations

<b>Risk Title</b>	<b>Risk Rating</b>
ST-S26 Resilient and Productive Communities	Medium
<b>Accountability</b>	<b>Action Planning Option</b>
Director Community and Place	Manage

The above risk/s relating to the issue contained within this report has been/have been identified and considered within the City's Strategic/Corporate risk register. Action plans are in place/have been developed to manage/mitigate this risk.

### **Policy Implications**

Nil

### **Financial Implications**

This initial research and consultation can be undertaken using existing resources. Any recommendations or actions for the City that come from the research may require additional operational budget and staff resources, and potentially impact delivery of other initiatives.

### **Voting Requirements**

Simple Majority

### **Recommendation**

**That Council REQUESTS that Administration undertake research and consult with stakeholders for the delivery of an externally run intergenerational practice program, with a report to be presented to Council within nine months.**

### **Administration Comment**

---

Intergenerational programs hold potential benefits to the advancement of each of the five priorities outlined in Goal 1 of the Strategic Community Plan 2021 – 2031. Initial research suggests intergenerational practices can promote generational harmony, cultural understanding and an increased sense of community belonging to participants.

As outlined in the City's Community Development Plan, Administration has recently completed a spotlight project into social connection for isolated people, confirming loneliness and its adverse effects as being a prevalent issue for particularly vulnerable cohorts within the City, including older people and retirees, and young people. The research identified one effective tool to reduce and prevent social isolation and loneliness can be through community connection, which may be facilitated through active community programs, which bring together diverse community to work collaboratively. Intergenerational practice programs are a potential option to fulfil this role.

Two examples of intergenerational programs that have been operating within the City include:

- Ashdale Secondary College's Community Tech Team; students have been teaching retirees at Brightwater's Kingsway Court Retirement Village the latest in technology, helping them feel more confident with their mobile phones, while the seniors share their own knowledge, as well as relics from past technologies. The Program was inspired by the ABC television show Old People's Home for Teenagers.
- Playgroup WA's Intergenerational playgroups in Madeley. Playgroup sessions provide a targeted invitation to sessions to attend these playgroup sessions along with the usual families that attend. The sessions include all the normal playgroup activities as well as time for chatting and catching up. Families do not need to be related to the seniors; they just need to be open to making new friendships and having fun together.

As part of this research, Administration can investigate opportunities aligned with existing City programs such as the Volunteering Program, Community Funding Program and various

programs delivered within City libraries. In addition, discussions can be held with community groups, such as community gardens, senior citizen centres and men's sheds, and other organisations including, Council for the Ageing (COTA), retirement villages, local schools and early learning centres to consider the knowledge and expertise required to run a structured, curriculum focused program. These discussions will also seek their interest in implementing such programs into the future.

Noting Administration's current efforts supporting community recovery from the Mariginiup fire, the proposed nine-month timeline is realistic and achievable.

*Attachments:*

[1](#). *Attachment 1 - Intergenerational Communities Research Report 24/21316*

# **Intergenerational Communities Research Report**

***CITY OF WANNEROO***

By Councillor Jordan Wright

## Lead Agency

Australian Institute for Intergenerational Practice

- The Australian Institute for Intergenerational Practice (AIIP) is a not-for-profit organisation established with a goal to advance evidence-based intergenerational practices in Australia
- AIIP’s vision is to continue to support the growth of intergenerational practices in Australia through advocacy, hosting national, local and membership only events, providing resources to members, consultancy, providing training and professional development courses and supporting further research in this field.
- The research shows that creating cross generational connections through intergenerational programs can be a powerful model for positive social impact and better health outcomes in Australia.
- As a peak body, AIIP acts as a conduit between research and practice by collaborating with younger and older people, industry, care service providers and tertiary education providers

<p><b>Our mission</b></p> <p>To bring together intergenerational stakeholders to advance mutually beneficial, evidence-based intergenerational activities to generate inclusive, age-friendly communities for children, teenagers, older adults, families and carers, the workforce, volunteers, and the wider community.</p>	<p><b>Our vision</b></p> <p>To be the peak body for sustainable intergenerational practice in Australia that creates benefits for young and older people, and the wider Australian community.</p>
<p><b>Our purpose</b></p> <p>FOR OLDER PEOPLE</p> <ul style="list-style-type: none"> <li>• reduce or delay cognitive and physical decline (dementia, frailty etc)</li> <li>• reduce social isolation</li> <li>• provide a sense of purpose and an improved mood</li> <li>• develop a theoretical basis for lifelong learning</li> </ul> <p>FOR YOUNGER PEOPLE</p> <ul style="list-style-type: none"> <li>• improve pro-social behaviours of sharing, help and cooperation</li> <li>• increase confidence and communication skills</li> <li>• reduce potential delinquent behaviour later in life</li> </ul> <p>FOR THE WORKFORCE</p> <ul style="list-style-type: none"> <li>• improve job satisfaction</li> <li>• expand skills, knowledge</li> <li>• provide career development / opportunities</li> </ul> <p>FOR THE WIDER COMMUNITY</p> <ul style="list-style-type: none"> <li>• reduce care burden</li> <li>• reduce ageism</li> </ul>	

## Existing Intergenerational Community Programs

- Ashdale Secondary College
  - Students from Ashdale Secondary College, in Perth's northern suburbs, have been visiting Brightwater's Kingsway Court Retirement Village. The teenagers have been teaching the retirees the latest in technology, helping them feel more confident with their mobile phones, while the seniors share their own knowledge, as well as relics from past technologies.
  - <https://www.abc.net.au/news/2023-04-08/teens-teach-retirees-about-tech-as-young-and-old-become-friends/102196742>
- Barridale Lodge Intergenerational Play Group Kingsley
  - Intergenerational playgroups add a third generation to the mix by including seniors. Playgroup sessions usually include all the normal fun of play, craft and other experiences, stories, songs, mornings tea or other shared snack time and well as time for chatting and catching up. Families do not need to be related to the seniors; they just need to be open to making new friendships and having fun together.

## Other Examples of Intergenerational Community Programs

- Old People's Home for 4 Year Olds
  - Summary out outcomes for older participants:
    - 80% were satisfied with life
    - 10 out of 11 participants shifted out of the depression range
    - 80% grip strength as well as up and go
    - 90% were more mobile—walking more
    - 80% showed improvements in mood
    - more than half of the participants showed improvements in balance.

## Benefits

### Benefits for seniors

- Feel a sense of being valued as a 'resource' to young families
- Connect with and spend time with their own extended families or other families within the local community
- Feel more involved and included in the community and with other people
- Experience a stronger sense of self-esteem through having a meaningful, valued role within the community
- Experience enhanced wellbeing through fun and friendships

### Benefits for Families




- Intergenerational playgroups provide an opportunity for families to add a new dimension to life experiences
- Introduce older people into the lives of young families who may otherwise have little interaction with seniors and older family members
- Facilitate friendships and relationships across generations
- Build connection to their community and an increased sense of responsibility for others in their community

- Offer opportunities to broaden life experiences, understanding and acceptance of others
- Learn from seniors attending the playgroup

**Benefits for service providers and organisations**

- Connect its services with the local community
- Experience enriched opportunities for learning more about participants in their service
- Implement a wellbeing person-centred approach with older persons in their care
- Expand the skills and experience of staff through working with families and young children as well as seniors

External Organisations: Structured Programs

<p>Volunteer Visitor Scheme</p> 	<p>ACVVS is a national initiative which connects volunteer community visitors (18+) from all backgrounds, and older people at risk of social isolation. The goal: friendship and companionship.</p> <p>Volunteers can participate in one-on-one or group visits to government-subsidised residential aged care homes, or one-on-one visits to people receiving Home Care packages.</p>
<p>Young Mentors</p> 	<p>Are you a young person who's a digital whiz? Read on! Young Mentors, run by the eSafety Commissioner, connects high school students and older Australians who are wanting to improve their digital skills and knowledge.</p> <p>Through these one-on-one mentoring sessions, young people get the opportunity to develop valuable teaching, communication and leadership skills while older Australians are provided with a safe environment to build their confidence, learn essential digital skills and engage with new technology.</p> <p>The Young Mentors program is facilitated through schools, libraries, councils, aged residential care facilities and other community groups.</p>
<p>Ed Connect Australia</p> 	<p>Ed Connect Australia is a national school-based charity that pairs volunteers (18+) with disadvantaged or young people at risk in primary and secondary schools to assist with learning support and any emotional issues they may have.</p> <p>Through long-term mentoring, volunteers are able to work with students during school hours and on school grounds to work on building supportive relationships and life skills.</p>
<p>Playgroups Australia</p>	<p>Intergenerational Playgroups are a whole lot of fun! These programs support parents and caregivers (of children under five) to connect with community</p>



 <p>Playgroup Australia</p>	<p>services, bringing the young and young at heart together to build relationships and connections through play.</p>
<p>ILA</p>  <p>Intergenerational Learning Australia</p>	<p>Intergenerational Learning Australia connects children from early childhood centres, primary and high schools, and undergraduates anywhere in Australia, to elders in residential aged care, retirement villages or their own home.</p> <p>Interactions are based on school subjects or cultural events. They happen via video conferencing or with both age groups at the same location. All coordination between the elders, aged care organisations and schools is provided by Intergenerational Learning Australia.</p>
<p>Raise</p>  <p>raise</p>	<p>Raise is a national school-based early intervention youth mentoring program. They recruit and train volunteers (aged 21+) to work with young students in years 7 to 9 to support their wellbeing and school engagement. Mentors and mentees work together in a 20-week program for two hours a week.</p>
<p>OPAN</p>  <p>OPAN Older Persons Advocacy Network</p>	<p>If you're an older person looking for further support to connect, the Older Persons Advocacy Network (OPAN) website has a range of options to connect in person, over the phone or online.</p>

#### Statistics:

- KPMG REPORT 7 NOVEMBER 2022 [<https://kpmg.com/au/en/home/media/press-releases/2022/11/connections-matter-australians-impacted-by-loneliness-7-november-2022.html#:~:text=Loneliness%20can%20affect%20anyone,.alone%20are%20also%20more%20impacted.>]
  - Loneliness is experienced by more than one quarter of Australians and most Australians will experience loneliness in their lifetime.
  - Young adults are at particularly high risk, with 37–50% of people aged 18–24 reported to be lonely.
  - Loneliness is a silent killer: Lonely people have a 26% increased risk of death.
  - The impacts of loneliness are equivalent to smoking 15 cigarettes or having six alcoholic drinks per day.
  - 54% are of people are lonelier after the COVID-19 pandemic.

# What is “intergenerational practice”?

Unlike informal groups, which bring together older people and children together for play, intergenerational programs are research-based structured and planned and are designed to provide benefits to both older and younger people.

Intergenerational programs are defined as planned, ongoing activities that **purposefully** bring together non-familiar generations under the supervision of formally trained care-givers.

These programs are pre-planned and structured and occur over time in order to build relationships between older and younger people.

## Different modes of intergenerational practice

Intergenerational activities can occur in a number of different modes including shared campus, visiting campus and video conference models.

### SHARED CAMPUS MODEL



Aged care and child care centres are located on the same site with shared infrastructure and facilities. The

intergenerational learning program is then provided in a multi-function room common to both aged care and child care facilities.

### VISITING CAMPUS MODEL



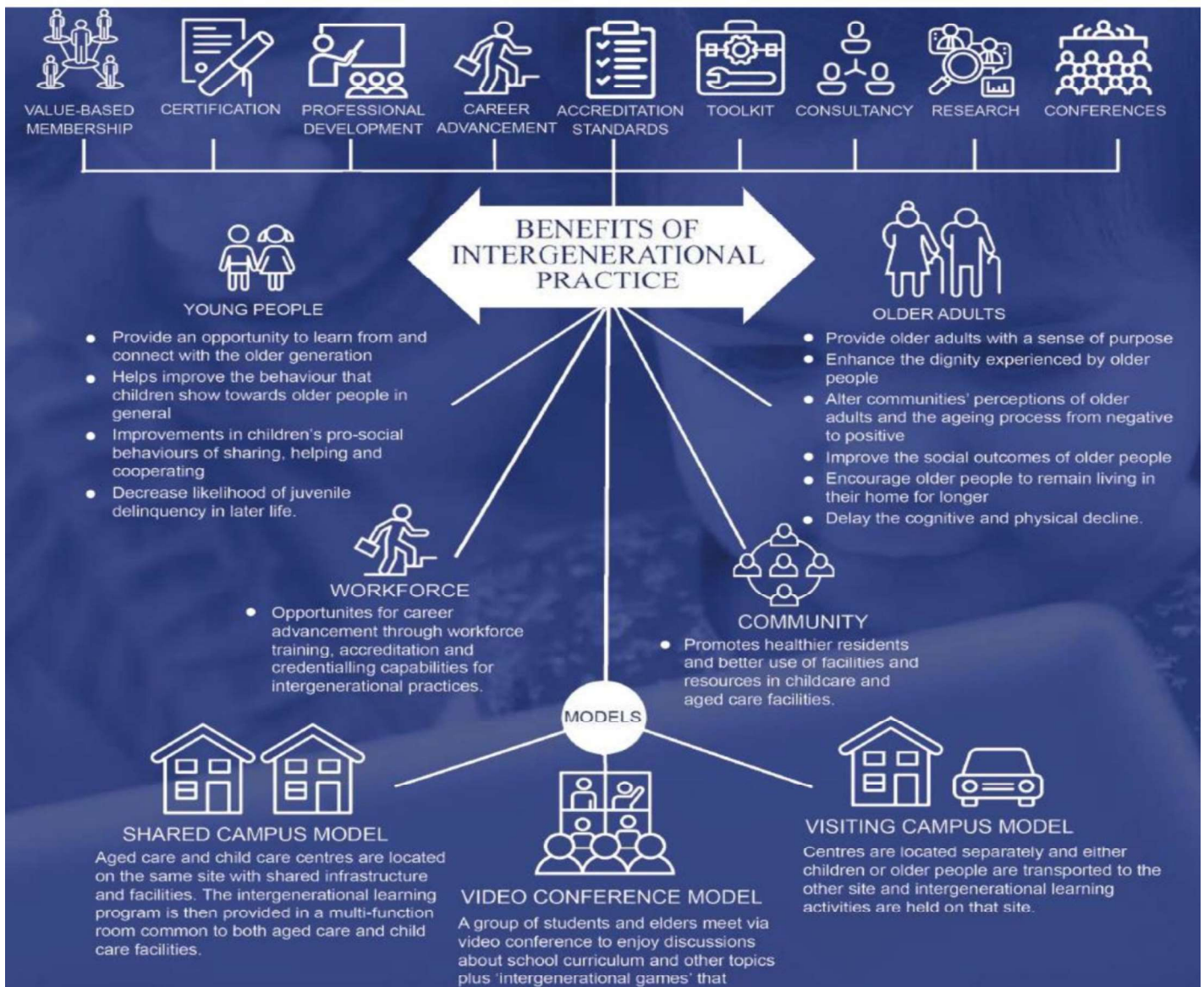
Centres are located separately and either children or older people are transported to the other site and

intergenerational learning activities are held on that site.

### VIDEO CONFERENCE MODEL



Online group-to-group video conferencing maintains connection when physical visits are not possible.



## SUBURB POPULATION STATISTICS (FROM 2021 CENSUS)

Suburb	0 - 4	5 – 11	12 – 17	18 - 24	25 - 34	35 - 49	50 - 59	60 - 69	70 - 84	85+	Total
Alexander Heights	457	704	612	732	948	1,485	1,108	1,008	611	100	7,772
Alkimos	1,019	1,283	764	826	2,030	2,401	983	528	327	35	10,203
Ashby	199	272	172	211	371	574	295	273	395	93	2,850
Banksia Grove	1,118	1,500	970	996	2,262	2,683	1,002	543	258	19	11,351
Butler	996	1,533	1,338	1,420	1,909	3,051	1,578	875	692	72	13,473
Carabooda	12	37	48	33	55	91	74	61	33	8	444
Carramar	398	763	750	689	718	1,646	1,138	626	399	40	7,178
Clarkson	1,068	1,397	998	1,288	2,462	3,026	1,727	1,143	712	71	13,904
Darch	392	830	848	802	711	1,823	1,012	466	411	54	7,347
Eglinton	459	439	251	326	867	788	291	191	96	0	3,705
Girrawheen	591	818	685	848	1,361	1,877	1,004	857	764	98	8,897
Gnangara	40	73	93	125	76	159	205	243	294	32	1,347
Hocking	515	800	624	577	990	1,723	778	592	353	30	6,987
Jandabup	5	16	26	31	18	51	48	53	52	0	291
Jindalee	276	360	368	395	526	943	647	337	168	7	4,044
Koondoola	256	392	332	444	500	768	443	362	376	47	3,919
Landsdale	1,324	1,845	1,316	1,373	2,261	3,746	1,860	1,026	566	75	15,401
Madeley	442	686	594	499	767	1,682	740	563	641	198	6,805
Marangaroo	609	907	774	956	1,339	2,013	1,363	1,228	1,040	258	10,483
Mariginiup	36	81	74	78	76	138	137	148	93	5	876
Merriwa	319	540	431	470	654	1,008	574	434	755	401	5,587
Mindarie	277	620	746	857	559	1,459	1,558	843	770	167	7,867
Neerabup	6	6	10	10	8	28	20	14	11	0	112
Nowergup	3	11	15	24	15	41	37	25	20	0	189
Pearsall	349	419	308	344	764	987	479	331	247	19	4,244
Pinjar	0	9	5	9	3	11	17	5	3	0	74
Quinns Rocks	471	850	882	892	1,012	1,828	1,461	827	546	85	8,861
Ridgewood	271	467	433	432	630	911	562	336	514	68	4,623
Sinagra	305	392	227	268	586	705	295	190	132	5	3,100
Tapping	620	1,183	965	857	1,059	2,361	1,232	647	562	75	9,547
Two Rocks	253	455	302	234	440	729	570	454	346	35	3,822
Wangara	0	0	0	0	0	0	0	0	0	0	43
Wanneroo	699	1,058	834	911	1,492	2,324	1,479	1,441	1,510	368	12,113
Woodvale	402	884	854	852	731	1,866	1,496	1,425	875	177	9,579
Yanchep	892	1,361	939	756	1,491	2,254	1,331	954	901	151	11,022
Total	14,748	22,166	17,790	18,741	29,094	45,485	26,088	17,721	14,653	2,623	209,109

## RESIDENTIAL AGED CARE CENTRES

Facility Name	Address	Features	# Respite Beds	Dementia Needs	High Care Needs	Low Care Needs	Total
Aegis Anchorage	340 Anchorage Dr MINDARIE	Ageing in Place, Booked Respite Program, Extra Services, High Care Needs, Low Care Needs, Admissions, Secure Dementia Care, Secure Garden	2 (High Care)		56	46	102
Aegis Shorehaven	49 Scotthorn Dr ALKIMOS	High Care Needs, Low Care Needs, Secure Dementia Care					134
Bethanie Beachside	629 Two Rocks Rd YANCHEP	Ageing in Place, Double Rooms, Facility Owned Pets, High Care Needs, Low Care Admissions, Secure Dementia Care, Secure Garden		80	140	20	160
Brightwater Aged Care Madeley	95 Imperial Circuit MADELEY	Ageing in Place, Booked Respite Program, High Care Needs, Low Care Needs, Secure Dementia Care, Secure Garden	1	25	73	11	110
Villa Terenzio	33 Kent Road MARANGAROO	High Care Needs, Aging in Place, Ethnicity Specific: Italian, Secure Dementia Care		44	106	31	181
Jacaranda Lodge Wanneroo	55 Belgrade Rd WANNEROO	High Care Needs, Low Care Needs, Secure Dementia Care		15	50		65
Juniper John Bryant	95 Rawlinson Dr MARANGAROO	Ageing in Place, Secure Dementia Care, High Care Needs		42	42		42
RAAFA Karri & Tuart Lodge	19 Hughie Edwards Dr MERRIWA	Ageing in Place, High Care Needs, Secure Dementia Care			110		110
RAAFA Vivian Bullwinkle	85 Hester Ave MERRIWA	Ageing in Place, Booked Respite Program, High Care Needs	1 (High/Low Care)		77	2	79
Regents Gardens Residential Resort Lake Joondalup	33 Drovers Place WANNEROO	Ageing in Place, Booked Respite Program, Double Rooms, Extra Services, High Care Needs, Secure Garden, Dementia Care	1 (High Care)	85	100		100
Wanneroo Community Nursing Home	9 Amos Rd WANNEROO	Ageing in Place, Booked Respite Program, High Care Needs, Secure Dementia Care		22	43		65

## RETIREMENT /LIFESTYLE VILLAGES

Facility Name	Address	Features	Number of Units
Belgrade Park Retirement Village	55 Belgrade Rd WANNEEROO	Over 55's lifestyle and retirement living.	192
Bethanie Beachside Retirement Village	80 Lindsay Beach Blvd YANCHEP	Lifestyle and retirement living.	45
Brightwater Retirement Living Kingsway Court	6 Countess Link MADELEY	Over 55's lifestyle and retirement living.	168
Fairway Villages The Green	Lakelands Country Club Clubhouse Lane GNANGARA	Over 55's lifestyle and retirement living.	290
Harbourside Village	7 Honiara Way MINDARIE	Lifestyle and retirement living.	88
Casa Cabrini Retirement Village	33 Kent Rd MARANGAROO	Retirement living.	11
Lake Joondalup Lifestyle Village	1140 Wanneroo Road ASHBY	Lifestyle and retirement living.	310
Lakelands Lifestyle Village	289 Sydney Rd GNANGARA WA	Over 55's lifestyle and retirement living.	102
Pineview Lifestyle Village	48 Ashley Road TAPPING	Lifestyle and retirement living.	132
RAAFA Retirement Living Cambrai Living	85 Hester Ave MERRIWA	Lifestyle and retirement living.	273
RAAFA Retirement Living Merriwa Estate	19 Hughie Edwards Dr MERRIWA	Lifestyle and retirement living.	240
Regents Gardens Lake Joondalup The Bungalows	8 Regents Garden Blvd WANNEEROO	Lifestyle and retirement living.	62
The Rise by Teman	76 Ridgewood Blvd RIDGEWOOD	Over 55's lifestyle and retirement living.	240

## DISABILITY SUPPORT SERVICES

Facility Name	Address	Features	Number of Units
Brightwater Marangaroo Transitional Accommodation Program	38 Brookland Cres MARANGAROO	Transitional Accommodation Program (Disability) – from Hospital to Home	23 beds across 4 houses
Sunflower Care Services	22 Dartford Cres MARANGAROO	Supported Accommodation & Respite for Intellectually Disabled People.	10 (High /Low care respite beds)

## SENIOR CITIZENS CENTRES &amp; GROUPS

NAME	LOCATION
Wanneroo Senior Citizens Centre	23 Civic Drive, Wanneroo
Girrawheen/Koondoola Senior Citizens Centre	11 Patrick Court, Girrawheen
Alexander Heights Senior Citizens Club	18 Linto Way, Alexander Heights
Quinns Rocks Senior Citizens Centre	Gumblossom Community Centre 17 Tapping Way, Quinns Rocks
GOLD Program (Growing Old and Living Dangerously)	Wanneroo Recreation Centre, 275 Scenic Dr, Wanneroo

## PRIMARY SCHOOLS

Primary Schools	Address	Phone Number
Alinjarra Primary School	33 Northumberland Avenue, Alexander Heights	9342 3388
Ashdale Primary School	51 Ashdale Boulevard, Darch	9406 6999
Alkimos Baptist College	60 Seagrove Boulevard, Merriwa	9406 8189
Alkimos Primary School	340 Benenden Ave, Alkimos	9562 9800
Alkimos Beach Primary School	200 Leatherback Boulevard, Alkimos	9561 7200
St. John Paul II Catholic Primary School	6 Kurrajong Boulevard, Banksia Grove	9303 7101
Banksia Grove Primary School	14 Viridian Drive, Banksia Grove	9404 6244
Brighton Catholic Primary School	1051 Connolly Drive, Butler	9562 9500
Burbridge Primary School	46 Burbridge Avenue, Koondoola	9342 1633
Butler Primary School	26 Camborne Park Way, Butler	9562 1804
Carnaby Rise Primary School	Pomodora Avenue, Landsdale	6401 8100
Carramar Primary School	71 Houghton Drive, Carramar	9405 0600
Clarkson Primary School	16 Aldersea Circle, Clarkson	9305 1800
East Butler Primary School	7 Amersham Crescent, Butler	9562 4344
East Wanneroo Primary School	32 High Road, Wanneroo	9405 1139
Emmanuel Christian School	4 Salcott Road, Girrawheen	9342 7377
Grandis Primary School	220 Grandis Blvd, Banksia Grove	9233 6500
Hudson Park Primary School	23 Arnos Way, Girrawheen	9342 4300
Hocking Primary School	50 Gungurru Avenue, Hocking	9404 8373
John Butler Primary College	Halesworth Parade, Butler	9561 4300
Kingsway Christian College	157 Kingsway, Darch	9302 8777
Koondoola Primary School	50 Burbridge Avenue, Koondoola	9343 1044
Landsdale Primary School	19 Warradale Terrace, Landsdale	9302 4100
Landsdale Christian School	77 Queensway, Landsdale	9309 1830
Landsdale Gardens Primary School	50 Amistad Road, Landsdale	6401 8150
Madeley Primary School	Martindale Avenue, Madeley	9302 3611
Marangaroo Primary School	88 Giralta Road, Marangaroo	9343 2055
Merriwa Primary School	67 Baltimore Parade, Merriwa	6206 2340
Merriwa Education Support Centre	67 Baltimore Parade, Merriwa	6206 2330
Mindarie Primary School	90 Rothesay Heights, Mindarie	9407 1100
Neerabup Primary School	14 Viridian Drive, Banksia Grove	
Northshore Christian Grammar School	50 Scotthorn Drive, Alkimos	1300 388 905
Mindarie Primary School	90 Rothesay Heights, Mindarie	9407 1100
Our Lady Of Mercy Primary School	55 Hudson Avenue, Girrawheen	9207 7677
Pearsall Primary School	Willespie Drive, Pearsall	9405 7845
Peter Moyes Anglican School	29 Elliston Parade, Mindarie	9304 5588
Quinns Beach Primary School	5 James Cook Avenue, Quinns Rocks	9561 7400
Quinns Rocks Primary School	6 Rees Drive, Quinns Rocks	6206 5200
Quinns Baptist College	8 Salerno Drive, Mindarie	9305 8882
Rawlinson Primary School	27 Rawlinson Drive, Marangaroo	9247 9000
Roseworth Primary School	30 Stebbing Way, Girrawheen	6240 4000
Roseworth Education Support Centre	30 Stebbing Way, Girrawheen	6240 4040
Spring Hill Primary School	50 Spring Hill, Tapping	9404 5178
St Stephens School Tapping	50 St Stephens Crescent, Tapping	9306 7100
Tapping Primary School	87 St Stephens Crescent, Tapping	9404 6033
Somerly Primary School	15 Somerly Drive, Clarkson	6206 4200
St Andrews Catholic Primary School	60 Victorsen Parade, Clarkson	9407 8000
St Anthony's Primary School	7 Servite Terrace, Sinagra	9303 7500
St Elizabeth's Catholic Primary School	30 Ranworth Rd, Hocking	9303 7600

St James Anglican School	2 Graceful Blvd, Alkimos	6336 8330
St. John Paul II Catholic Primary School	6 Kurrajong Blvd, Banksia Grove	9303 7101
Two Rocks Primary School	51 Resolute Drive, Two Rocks	9561 6888
Wanneroo Primary School	15 Shaw Road, Wanneroo	9306 0500
Waddington Primary School	15 Henniker Way, Koondoola	9342 7511
Yanchep Lagoon Primary School	15 Primary Road, Yanchep	9561 1155
Yanchep Beach Primary School	100 Lindsay Boulevard, Yanchep	9561 6080

## SECONDARY SCHOOLS

Secondary Schools	Address	Phone Number
Alkimos Baptist College	60 Seagrove Boulevard, Merriwa	9406 8189
Ashdale Secondary College	75 Westport Parade, Darch	9302 7100
Atlantis Beach Baptist College	Breakwater Drive, Two Rocks	9544 3000
Butler College	15 McCormack Boulevard, Butler	9561 4200
Clarkson Community High School	16 Walyunga Boulevard, Clarkson	9400 1777
Girrawheen Senior High School	39 Calvert Way, Girrawheen	9247 0555
Irene McCormack Catholic College	18 Bradman Drive, Butler	9562 2400
Joseph Banks Secondary College	40 Joseph Banks Boulevard, Banksia Grove	9303 7400
Mercy College	26 Mirrabooka Avenue, Koondoola	9247 9247
Mindarie Senior College	14 Elliston Parade, Mindarie	9304 5800
Peter Moyes Anglican School	29 Elliston Parade, Quinns Rocks	9304 5588
Quinns Baptist College	8 Salerno Drive, Mindarie	9305 8808
St Stephens School Tapping	50 St Stephens Crescent, Tapping	9306 7100
Wanneroo Secondary College	56 Quarkum Street, Wanneroo	9206 6555
Yanchep Secondary College	21 Ravensbourne Street, Yanchep	9562 8000
Yanchep District High School	Now called Yanchep Lagoon PS (see above)	

## DAY CARE CENTRES

Day Care Centres	Address	Phone Number
Alexander Heights Early Learning Centre	95 Azelia Street, Alexander Heights	9247 3491
Alkimos Beach Early Learning	10 Turnstone Street, Alkimos	0411 164 332
Alkimos School of Early Learning	44 Santorini Prom, Alkimos	9541 0950
Atlantis Childcare Ocean Keys	61 Ocean Keys Boulevard, Clarkson	9407 9911 ext 1
Atlantis Child Care Centre - Yanchep	93 Lindsay Beach Bvd, Yanchep	9561 1180
Atlantis Preschool Centre – Yanchep	60 St Ives Dr, Yanchep	9561 5393
Bloom Early Education - Jindalee	6 Cockleshell Brace, Jindalee	9562 1900
Bloom Early Education - Yanchep	61 Lagoon Drive, Yanchep	9561 5909
Buggles Childcare – Butler	Unit 1, Lukin Centre, 2 Catviva Approach, Butler	1300 441 441
Busy Bees on Ashdale	15 Ashdale Boulevard, Darch	9303 9507
Busy Bees at Quinns Beach	218 Santa Barbara Pde, Quinns Rocks	9562 7560
Care for Kids School of Early Learning - Banksia Grove	2 Glasshouse Drive, Banksia Grove	9361 7413
Care for Kids School of Early Learning – Clarkson	34 Ladera Drive, Clarkson	9408 5966 9284 7060
Clarkson Early Learning Centre	22 Ainsbury Parade, Clarkson	9305 7307
Clarkson Safe n Sound Daycare	2 Dewar Mews, Clarkson	9407 7606
Compass Early Learning Centre	869 Connolly Drive, Merriwa	9144 9800

Cuddles Early Learning & Childcare - Two Rocks	Gift Way, Two Rocks	9554 0870
Drovers Little Learners	Shop 2 / 1387 Wanneroo Road, Wanneroo	0447 371 068
Goodstart Early Learning - Banksia Grove	10 Vididian Drive, Banksia Grove	9404 7337
Goodstart Early Learning - Darch	83 Furniss Road, Darch	9302 5044
Goodstart Early Learning - Clarkson	60 Burnett Drive, Clarkson	9407 9644
Goodstart Early Learning - Girrawheen	2 Wade Court, Girrawheen	9343 4711
Goodstart Early Learning - Madeley	17 Kingsway Road, Madeley	9309 3855
Goodstart Early Learning - Merriwa	16 Hughie Edwards Drive, Merriwa	9305 8633
Goodstart Early Learning - Mindarie	14 Rothesay Heights, Mindarie	9407 7447
Goodstart Early Learning - Sinagra	12 Cetara Chase, Sinagra	9405 8122
Goodstart Early Learning Centre - Tapping	58 Clarkson Ave, Tapping	9306 2711
Great Beginnings - Alkimos	3/3 Bulwark Avenue, Alkimos	9562 5466
Great Beginnings - Butler	14 Marchwood Boulevard, Butler	9562 5744
Great Beginnings - East Wanneroo	42 Scott Road, East Wanneroo	9206 0426
Great Beginnings - Marangaroo	2 Parin Road, Marangaroo	1800 517 086
Great Beginnings - Quinns Rocks	14 Duncombe Grove, Quinns Rocks	9562 3397
Great Beginnings - Wanneroo	32 Mulwarrie Circle, Wanneroo	9306 9420
Happy Hands Early Learning Centre	63 Houghton Drive, Carramar	9206 0144
Hocking Stars Early Learning Centre	1 Turin Entrance, Hocking	9206 2002
Keiki Early Learning - Alkimos	12 Longstaff Avenue, Alkimos	6500 2700
Keiki Early Learning - Mindarie Keys	18 Anchorage Drive, Mindarie	9407 9388
Keiki Early Learning Mindarie Primary – Outside School Hours Care & Three Plus School Readiness	Mindarie Primary School 90 Rothesay Heights, Mindarie	0448 588 166
Kids Inn Childcare - Ashby	24 Korovin Drive, Ashby	9206 3243
Kidz Biz Early Learning Centre – Wanneroo	3 Keane Street, Wanneroo	9306 5557
Koondoola Community Kindergarden	20 Burbridge Ave, Koondoola	9342 3676
Landsdale Early Learning and Enrichment	215 Landsdale Road, Landsdale	6305 0999
Landsdale School of Early Learning	2 Denman Gardens, Landsdale	6300 4703
Little Buckets - Butler	Lot 3045 Butler Boulevard, Butler	9563 1313
Little Buckets - Ridgewood	48 Feakle Bend, Ridgewood	9304 4476
Little Dimples Early Learning Centre	40 Backshall Place, Wanneroo	9306 3444
Little Peoples Place Early Learning Centre - Banksia Grove	1 Fairywren Street, Banksia Grove	9306 1088
Marangaroo Child Care Centre	11 Bradford Place, Marangaroo	9343 6629
Mercycare Early Learning Service Banksia Grove	300 Joseph Banks Boulevard, Banksia Grove	6298 9852
Mercycare Early Learning Centre – Landsdale	127 The Broadview, Landsdale Shopping forum, Landsdale	9302 2087
Mercycare Early Learning Service – Merriwa	1 Seagrove Boulevard, Merriwa	9305 7527
Milestones Early Learning - Quinns Rocks	9/10 Mindarie Drive, Quinns Rocks	9305 9320
Mini Bambini Early Learning	3 Messina Drive, Sinagra	0478 083 079
Montessori Early Childhood Centre	12 Jenolan Way, Merriwa	9304 6222
Nido Early School - Banksia Grove	1001 Joondalup Drive, Banksia Grove	9206 5822
Nido Early Learning - Hocking	176 Nicholas Road, Hocking	9306 4316
Nido Early Learning - Kingsway	168 Wanneroo Road, Madeley	6117 5099



Nido Early School - Yanchep	29 Morwell Street, Yanchep	6244 4500
Play's Kool - Marangaroo	Shop 38/64 Newpark Shopping Centre, cnr Balgonie Ave and Marangaroo Drive Marangaroo	9343 4393
Pearsall Child Care Centre	45 Ashbrook Ave, Pearsall	9206 5388
YMCA WA - Ashdale Early Learning Centre	44 Westport Parade, Darch	9303 9264 9473 8480